

TDK Commercial Advisors is pleased to announce our appointment as the exclusive listing agent for:



1 Chelsea Parkway, Boothwyn, PA

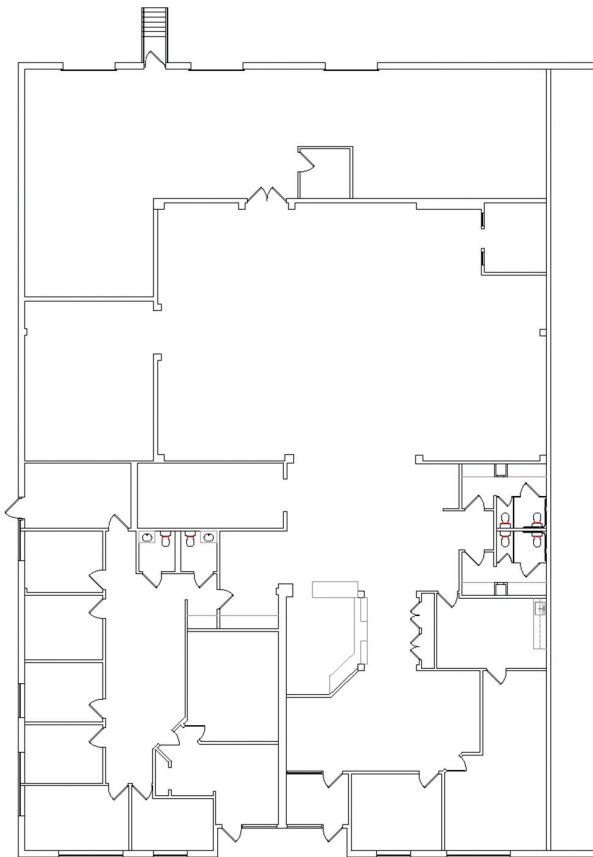


Thomas D. Kramer
2200 Renaissance Blvd.
Triad, Suite 210
King of Prussia, PA 19406
215.292.5575
tom@tdkca.com

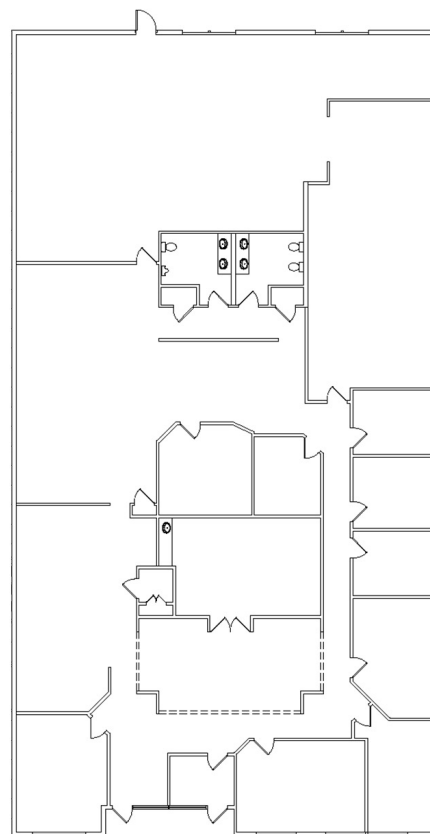
1 Chelsea Parkway, Boothwyn, PA

Property Facts:

- ◆ 1 Chelsea Parkway is within 1.5 miles of I-95 and Rt 322 Interchange.
- ◆ Ample front parking with additional parking in the rear of the property.
- ◆ Divisible from 4,800 to 14,000 sf.
- ◆ Zoned I-1.
- ◆ Attractively landscaped with individual tenant entrances, insulated tinted windows and individually metered gas and electric.
- ◆ Rear loading for each suite.
- ◆ Perfect for medical, general business, light industrial.
- ◆ Rate from \$8.00/sf triple net.



1 EXISTING FLOOR PLAN
EC-1 SCALE: 1/8" = 1'-0"



1 EXISTING FLOOR PLAN
EC-1 SCALE: 1/8" = 1'-0"